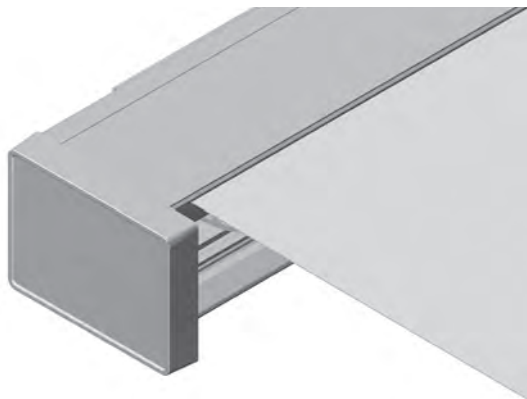



CAMABOX BX4000

Cassette awning with folding arms

BX4000



	min. 214 cm max. 550 cm		min. 150 cm max. 300 cm
---	----------------------------	---	----------------------------

	5°–35° Wall fixing 5°–35° Top fixing 5°–35° Rafter installation
---	---

Minimal width for a given projection

Projection	Minimal width
150 cm	214 cm
200 cm	254 cm
250 cm	314 cm
300 cm	374 cm

Description

Multi-piece U-shaped protective box (dimensions 230 x 170 mm) from extruded aluminium profile as support element of the structure. Side cover as cassette end for receiving fabric roller shaft \varnothing 78 mm from galvanised steel. The box profile is provided with a continuous hook for hanging the awning on the brackets used for the wall installation. The force is transmitted via the arm support, connected to the box profile, to which the jointed arms are mounted via a tilt joint. Drop profile from extruded aluminium in square shape (54 x 170 mm) with matching side covers from cast aluminium alloy. Folding arms with inverse incline of aluminium extruded profiles and precision parts of aluminium cast alloy, internal tension springs and double stainless steel cables and cable protector over the middle joint. Simple and infinite inclination angle adjustment via adjusting nut on the tilt joint from 5° – 35° for wall, ceiling and frame installation. The aluminium profiles and aluminium cast parts are powder-coated in façade quality.

Wind resistance: The system fulfils wind resistance class 3 (to DIN 13561).

Cover: The cover with a spin-dyed acrylic cloth (price category 1), colour fast, very high UV protection, good tensile strength, water and dirt resistant is from the STOBAG collection. Polyester, acrylic etc. and various assembly technologies such as gluing, TENARA stitching, etc. as per STOBAG collection (collection index) can be optionally selected.

Drive: Tubular motor 230 VAC, 50 Hz or 120 VAC, 60 Hz (country-specific) with electromechanical brakes and electronic end position switch off. Thermal protection, protection class IP54 (spray water), with 50-150 cm connection cable. Optional remote-control version: Radio tubular motor 230 VAC, 50 Hz or 120 VAC, 60 Hz (country-specific) with electromechanical brakes and electronic end position switch off. Integrated radio receiver, thermal protection, protection class IP54 (spray water), with 50-150 cm connection cable. Manual version: Bevel gearbox with adjustable end stop and free-wheel crank handle, reduction ratio 4.6:1. The bevel gearbox is operated via a removable operating handle shaft of powder-coated metal in white and grey with hook and plastic handle.

Options:

Brackets: An additional ceiling bracket is required for ceiling mounting and an additional rafter bracket is required for rafter mounting.

LED lighting integrated in the box: Located on a separate profile on the underside of the protective box is a groove for an integrated light, which is set at an angle of 40° from the wall, allowing a LED strip light (LED light source warm white) to be built in. It is covered by a plastic reflector profile. Variants with remote control and dimmer are possible.

METHOD OF DELIVERY

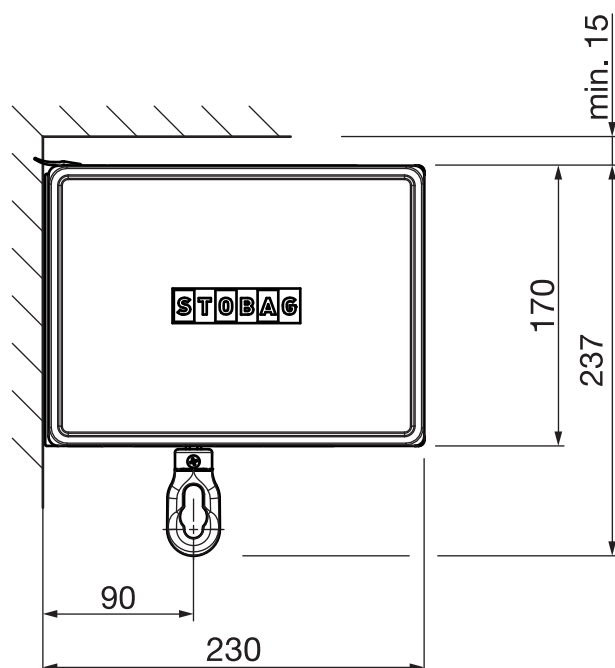
Awnings completely assembled, with cover.

CAMABOX BX4000

Cassette awning with folding arms

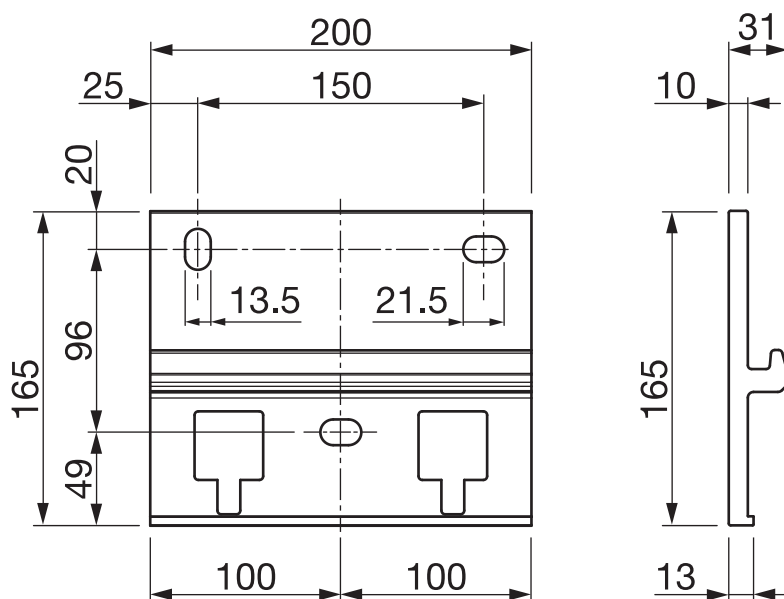
BX4000

Wall fixing



BX4000

Wall bracket BX424

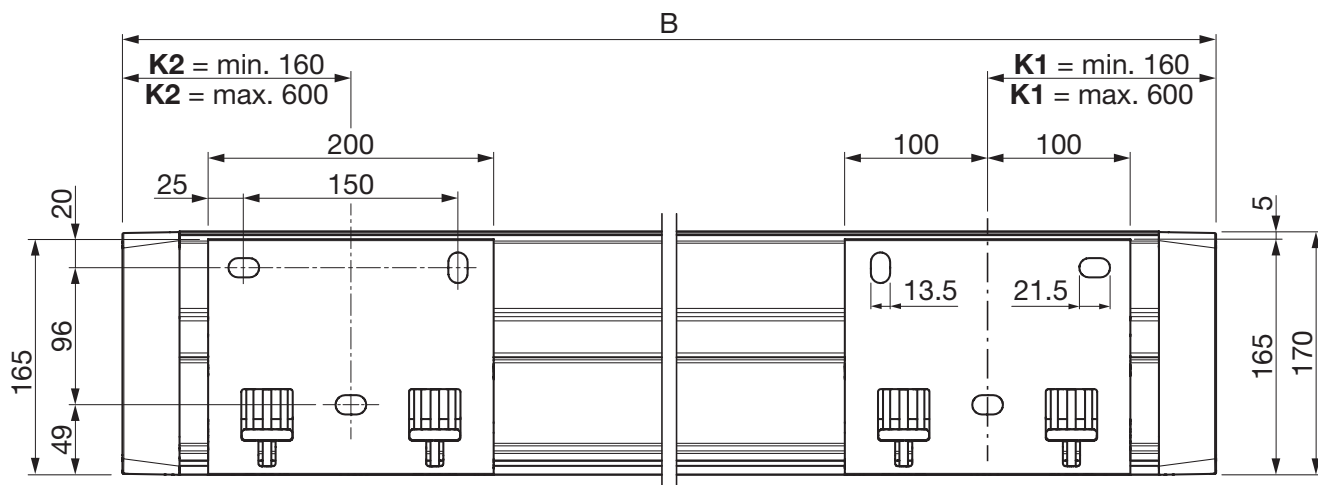


CAMABOX BX4000

Cassette awning with folding arms

BX4000

Installation drawing



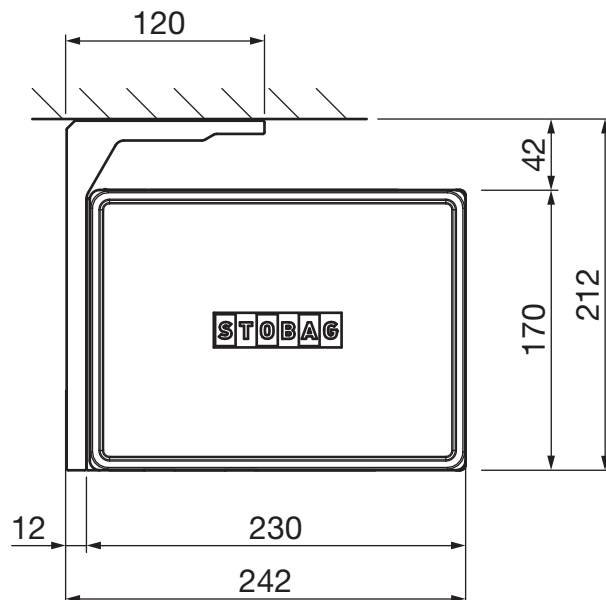
B = total width

CAMABOX BX4000

Cassette awning with folding arms

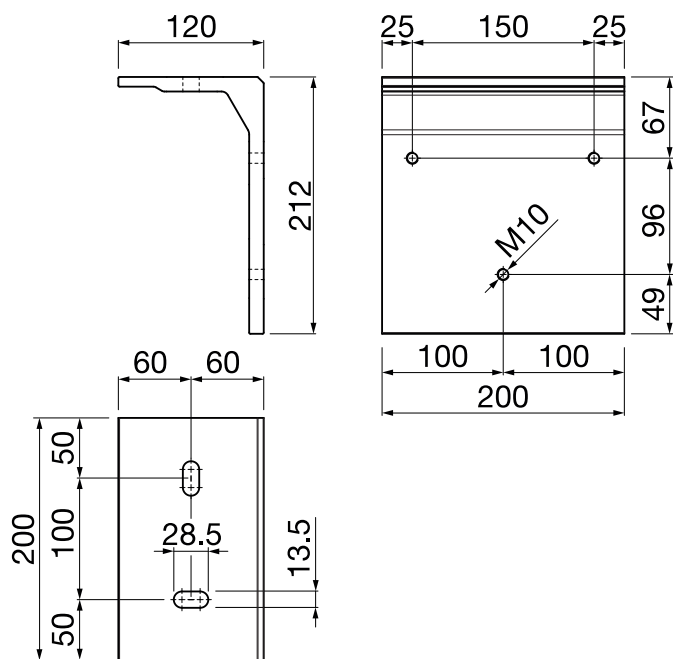
BX4000

Top fixing



BX4000

Ceiling bracket BX426

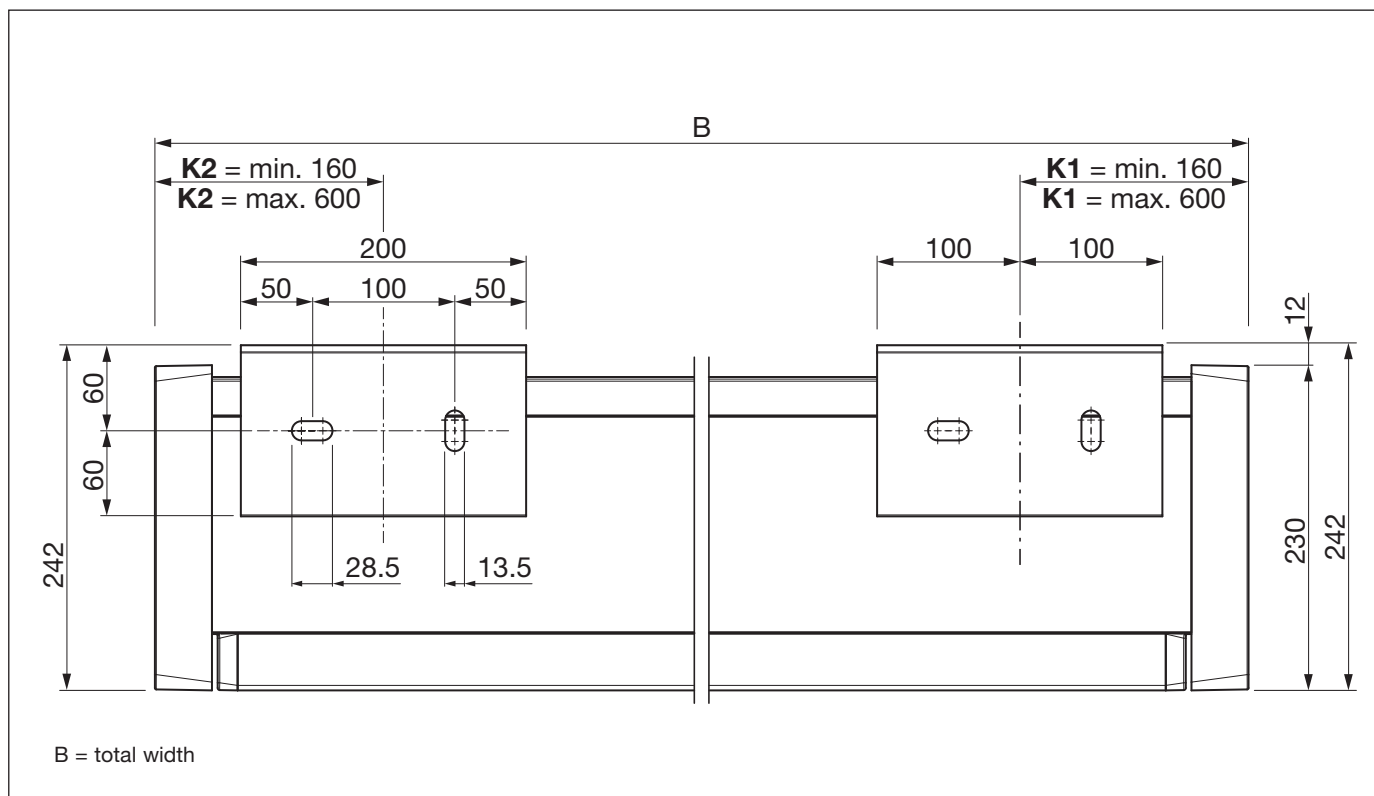


CAMABOX BX4000

Cassette awning with folding arms

BX4000

Installation drawing

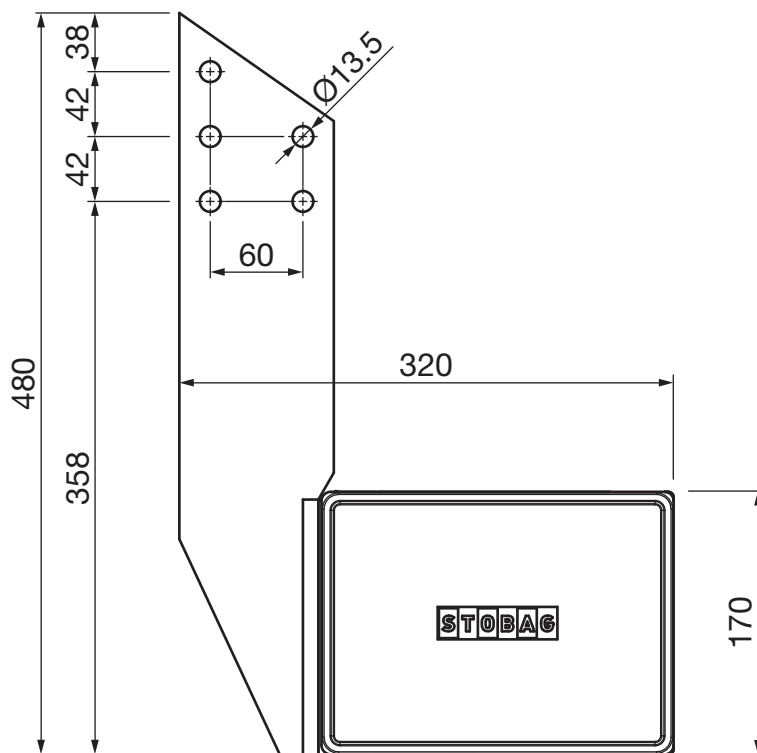


CAMABOX BX4000

Cassette awning with folding arms

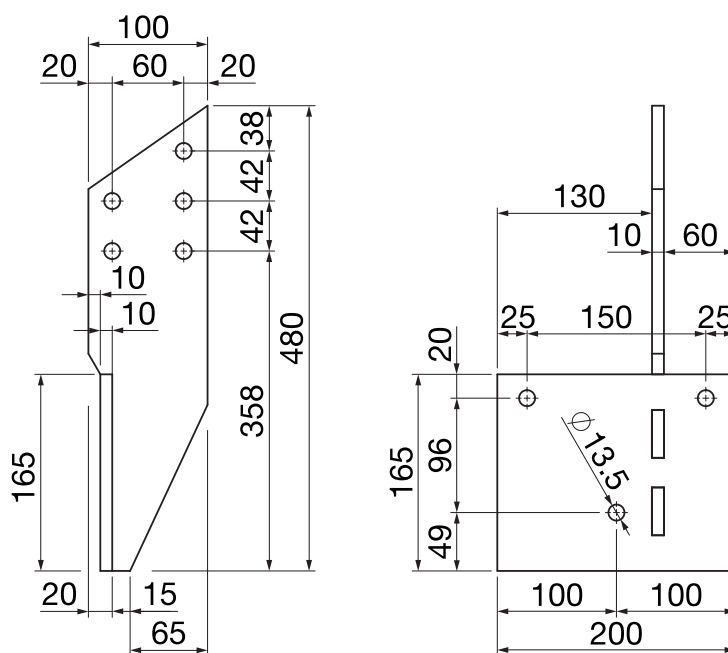
BX4000

Rafter installation



BX4000

Rafter bracket BX427

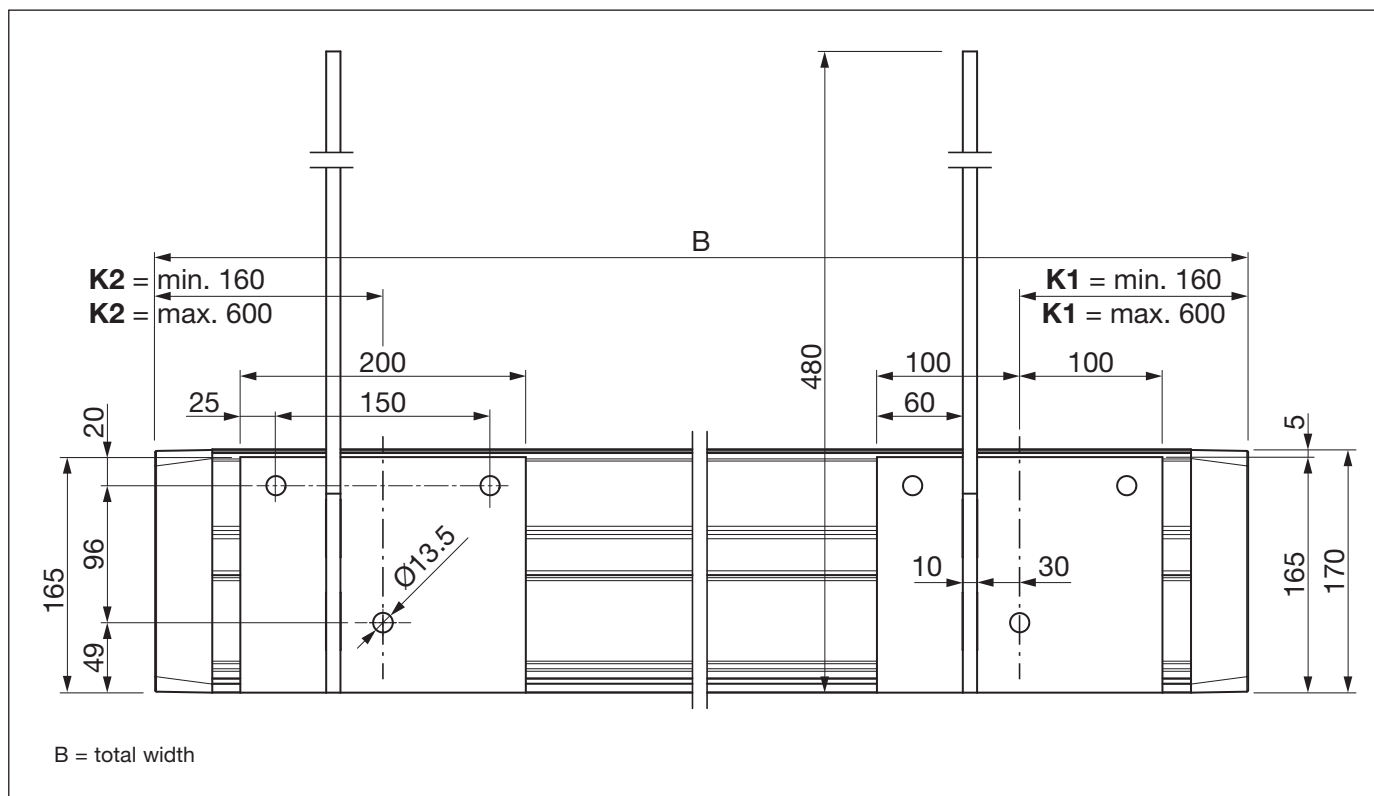


CAMABOX BX4000

Cassette awning with folding arms

BX4000

Installation drawing



CAMABOX BX4000

Cassette awning with folding arms

BX4000

Folding arm BX420 with 150 cm projection

Total width (w = in mm)	K1 / K2 (min. in mm)	K1 / K2 (max. in mm)
2134	160	160
2200	160	193
2300	160	243
2400	160	293
2500	160	343
2600	160	393
2700	160	443
2800	160	493
2900	160	543
3000	160	593
3014 - 5500	160	600

Folding arm BX420 with 250 cm projection

Total width (w = in mm)	K1 / K2 (min. in mm)	K1 / K2 (max. in mm)
3134	160	160
3200	160	193
3300	160	243
3400	160	293
3500	160	343
3600	160	393
3700	160	443
3800	160	493
3900	160	543
4000	160	593
4014 - 5500	160	600

Brackets minimum – maximum

Folding arm BX420 with 200 cm projection

Total width (w = in mm)	K1 / K2 (min. in mm)	K1 / K2 (max. in mm)
2534	160	160
2600	160	193
2700	160	243
2800	160	293
2900	160	343
3000	160	393
3100	160	443
3200	160	493
3300	160	543
3400	160	593
3414 - 5500	160	600

Folding arm BX420 with 300 cm projection

Total width (w = in mm)	K1 / K2 (min. in mm)	K1 / K2 (max. in mm)
3734	160	160
3800	160	193
3900	160	243
4000	160	293
4100	160	343
4200	160	393
4300	160	443
4400	160	493
4500	160	543
4600	160	593
4614 - 5500	160	600

CAMABOX BX4000

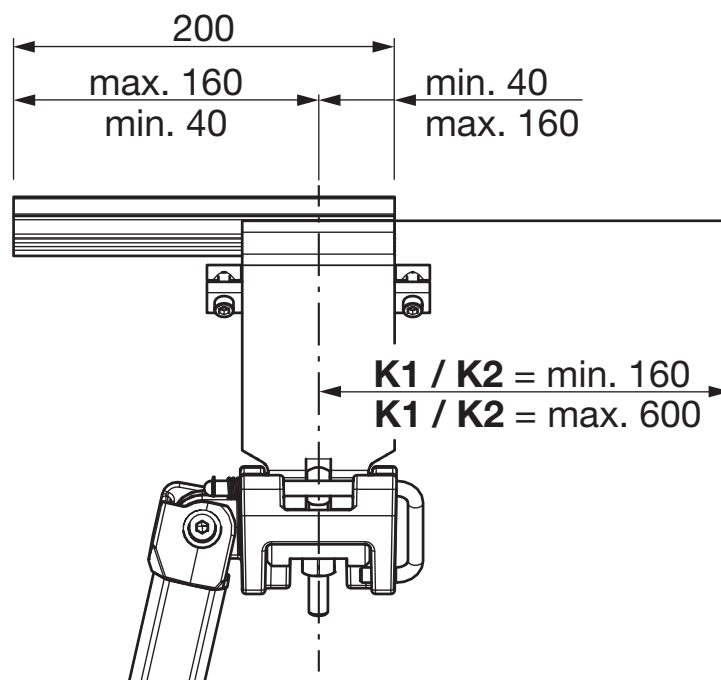
Cassette awning with folding arms

BX4000

Variant: Brackets - arm supports

CAUTION:

The brackets must always be installed behind an arm support.

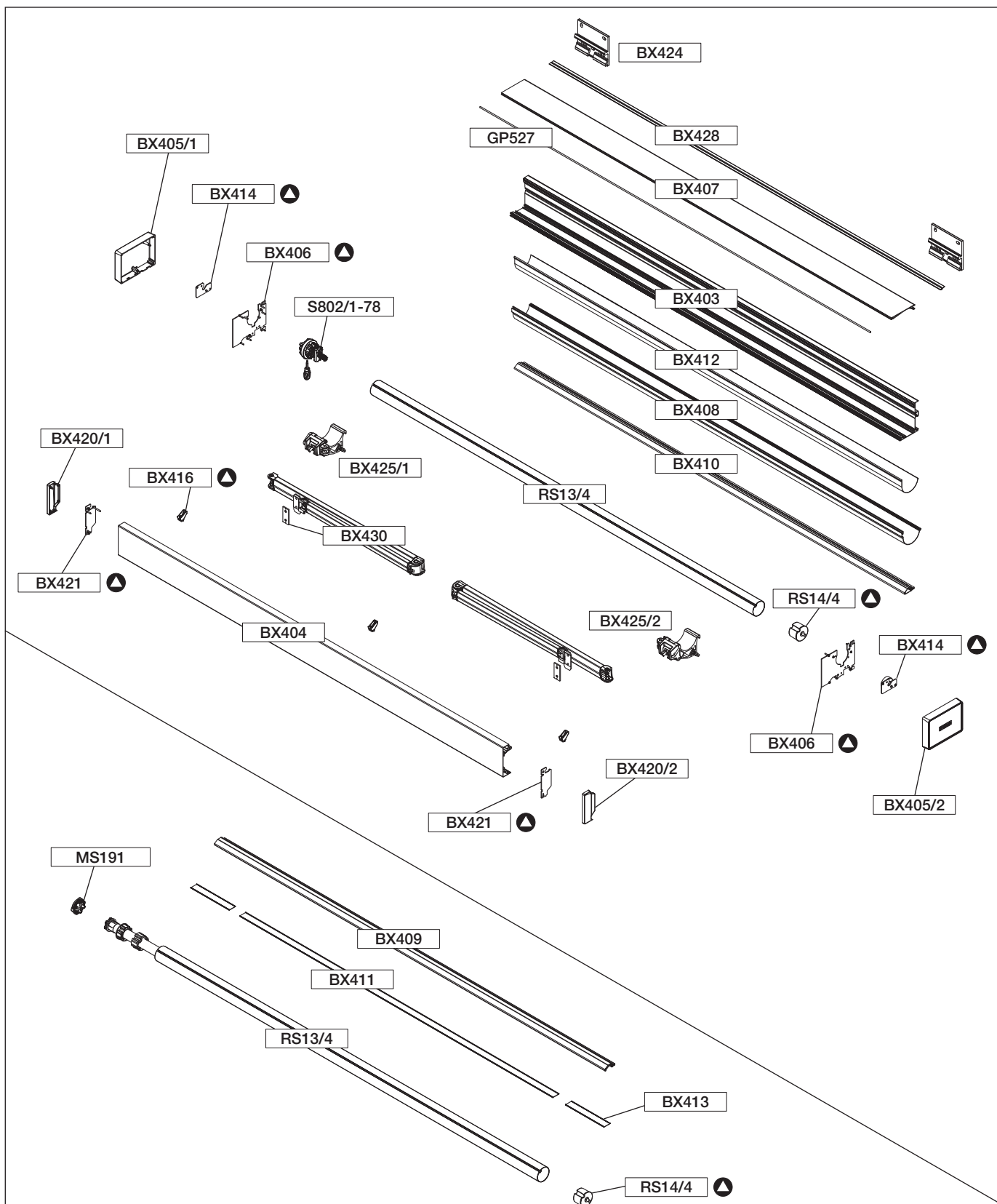


CAMABOX BX4000

Cassette awning with folding arms

BX4000

Exploded view



Set:

▲ = BX4010

BX4000

CAMABOX BX4000

Cassette awning with folding arms

BX4000

Components list

BX4010	BX406 BX414 BX416 BX421 P244/1 RS14/4	CAMABOX fitting Comprising 2 side plates, large 2 drive mountings 3 entry guide sets 2 side plates, small 1 counter bearing 1 bearing pin, 78 mm round without edge		pc.
BX403		Box profile	400 cm 500 cm 550 cm	pc. pc. pc.
BX404		Front rail	400 cm 500 cm 550 cm	pc. pc. pc.
BX405/1 BX405/2	left right	Side cover, large		pc. pc.
BX407		Roof profile	400 cm 500 cm 550 cm	pc. pc. pc.
BX408		Door panel	400 cm 500 cm 550 cm	pc. pc. pc.
BX409		Lighting strip	400 cm 550 cm	pc. pc.
BX410		End strip	400 cm 550 cm	pc. pc.
BX411	zu BX409	Light panel	144 cm 192 cm 240 cm 294 cm 342 cm 390 cm 444 cm 492 cm	pc. pc. pc. pc. pc. pc. pc. pc.
BX412		Guide shell	550 cm	pc.
BX413	zu BX409	Blank strip	300 cm	pc.
BX420	zu BX404	Side cover, pair, small		pc.
BX424		Wall bracket		pc.
BX425/1 BX425/2	left right	Tilt joint		pc. pc.
BX426		Ceiling bracket		pc.

CAMABOX BX4000

Cassette awning with folding arms

BX427		Rafter bracket		pc.
BX428		Wall connector profile	50 m	lm pc.
BX430		Folding arm, pair	150 cm 200 cm 250 cm 300 cm	pc. pc. pc. pc.
GP527		Sealing hose	500 cm	pc.
RS13/4		Roller tube 78 mm	400 cm 500 cm 700 cm	pc. pc. pc.
S802/1-78 S802/2-78	left right	Gear unit fittings	With lighting not possible	pc. pc.
S804		Crank handle	80 cm 100 cm 120 cm 135 cm 150 cm 160 cm 180 cm 200 cm	pc. pc. pc. pc. pc. pc. pc. pc.
EZ6080		LED electric unit CAMABOX without radio		pc.
EZ6081		LED electric unit CAMABOX radio io		pc.
EZ6090		Electric unit fitting without radio		pc.
EZ6091		Electric unit fitting, radio io		pc.
SL115/TE SL120/TE SL125/TE SL130/TE SL135/TE SL140/TE SL145/TE SL150/TE		LED strip including 240 cm electric cable	150 cm 200 cm 250 cm 300 cm 350 cm 400 cm 450 cm 500 cm	pc. pc. pc. pc. pc. pc. pc. pc.
MS191		Motor bearing		pc.

CAMABOX BX4000

Cassette awning with folding arms

BX4010



BX408



BX413



BX403



BX409



BX420



BX404



BX410



BX424



BX405/1 / BX405/2



BX411



BX425/1 / BX425/2



BX407



BX412



BX426



CAMABOX BX4000

Cassette awning with folding arms

BX427



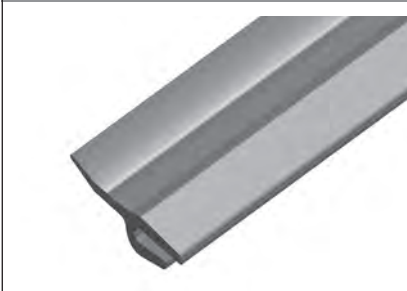
S802/1-78 / S802/2-78



SL115/TE - SL150/TE



BX428



EZ6080



MS191



BX430



EZ6081



GP527



EZ6090



RS13/4



EZ6091

